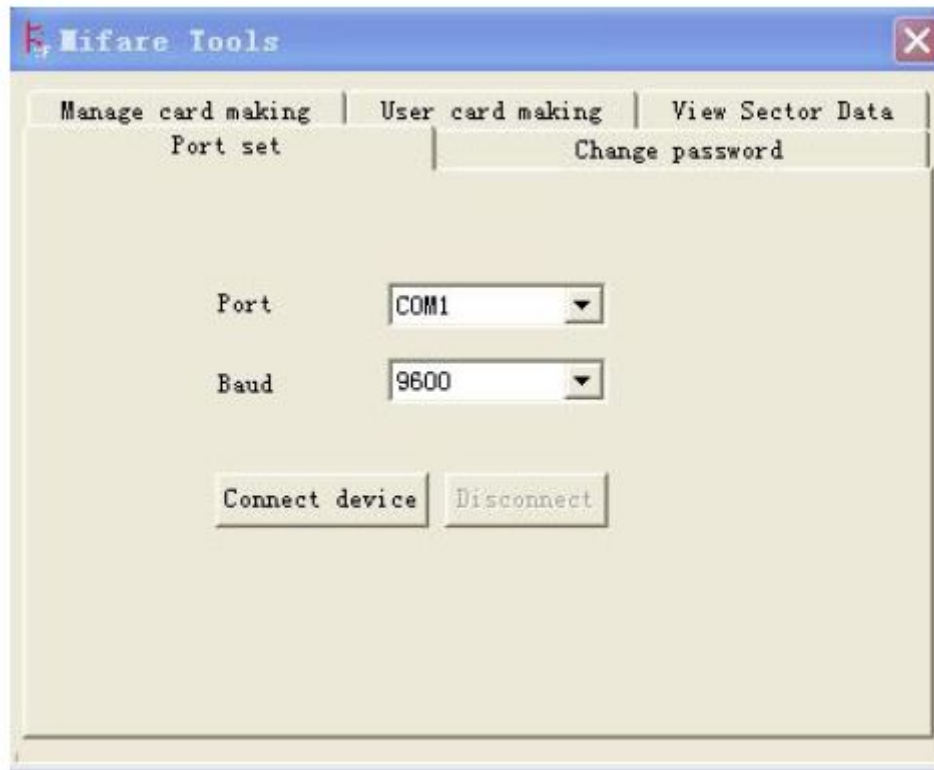


Manager Card Software Operation Manual

First connect the Mifare card reader (Model:ACM08M), get the power by USB, carry out Mifare.exe program, get the software interface, click Connect deviceIt will indicate “open port success!” if success .



Step 1: manager card making

1. Change manager card password:

Choose “1” for the sector.

Add the “FFFFFFFFFFFF” (Remarks: all the new card default password is “FFFFFFFFFFFF”)into old password

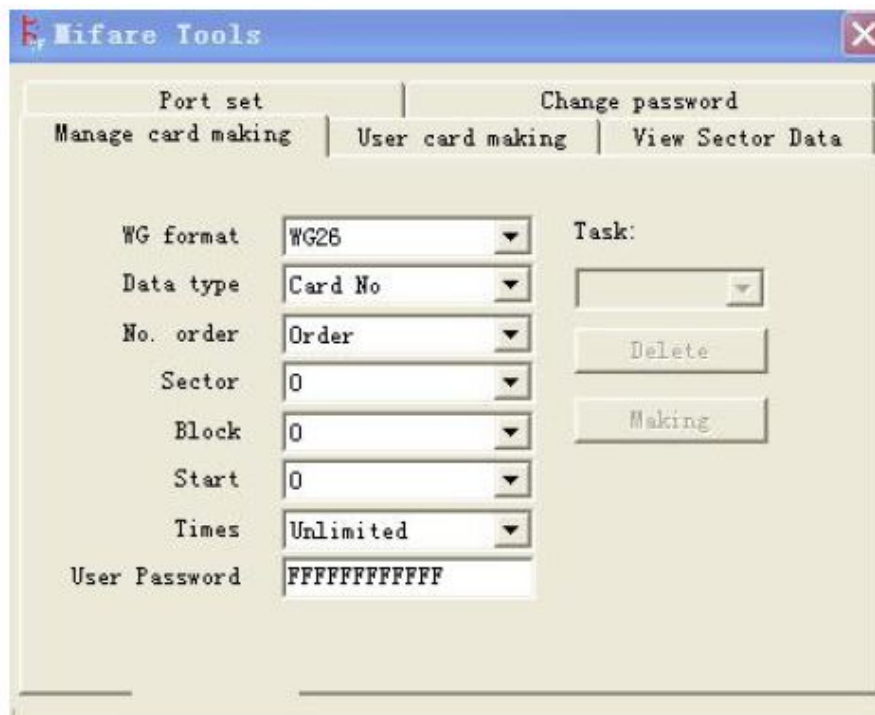
add “657266696438” (manager card default password) into the new password

confirm :“657266696438” ,and press Change.

It will indicate password change success.



2. Manager card making: choose all the data in the left select sheet,
 Let "Data type ,No. order ,start,times (the manager card using frequency)" default, click Making
 Put into task name as request, after confirm all , indicate manager card making success. You can
 make more manager cards.



3. First cut the reader power off then power on , read the finished manager card from the reader,
 the reader will make two sounds "di ,di", it indicates that is the right format of the manager card.

Step 2: User card making

1.Put into the card number according to the manager card task. If using the new card, the card

password will be “FFFFFFFFFFFF” 、

And then click the making

It indicate success making, then the card number will the skip into the next one.



2.If the user card is the one used in this system already, the only change is the card number ,the Old PWD (Old password) is the current password.

3.Can make more user card.